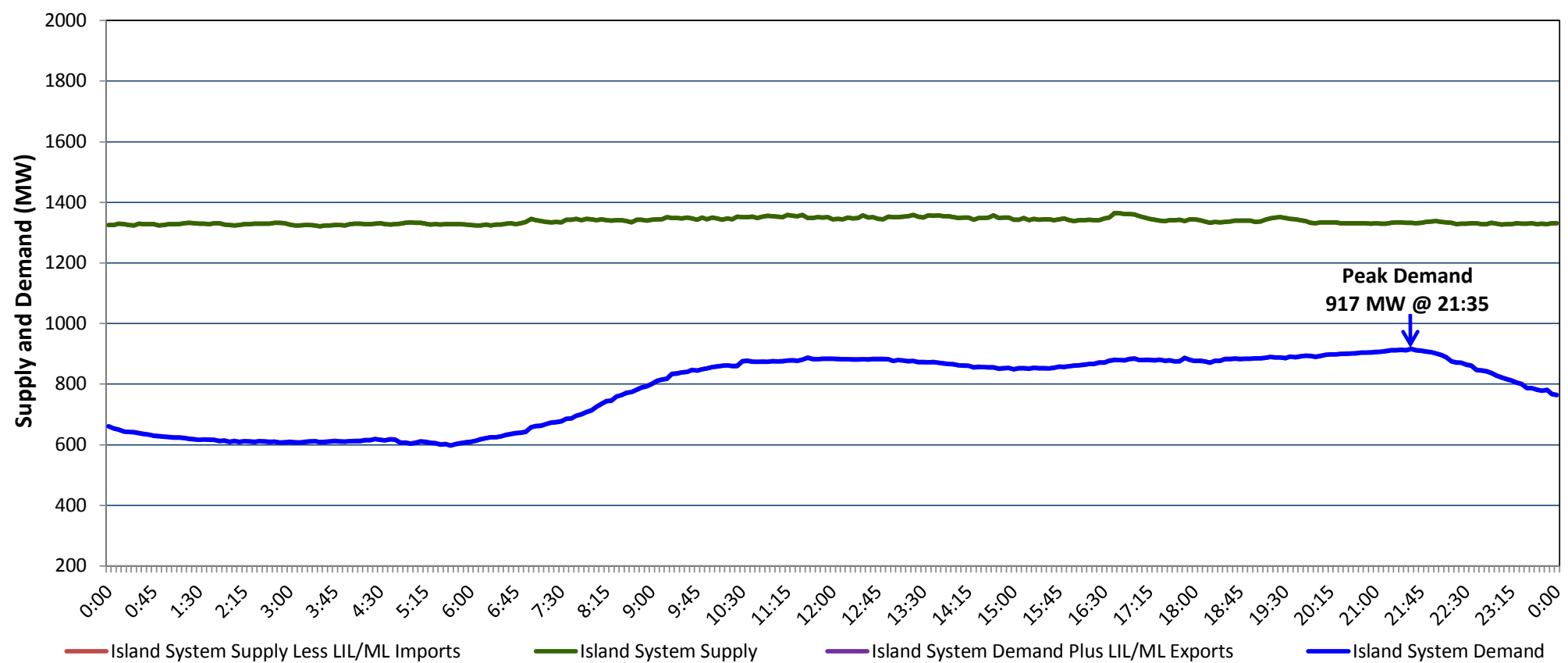


**Newfoundland Labrador Hydro (NLH)
Supply and Demand Status Report Filed Monday, June 10, 2019**

**Section 1
Island Interconnected System Supply, Demand & Exports
Actual 24 Hour System Performance For Sunday, June 09, 2019**



Supply Notes For June 09, 2019

1,2

- A As of 0000 hours, April 01, 2019, Holyrood Unit 3 unavailable due to planned outage (150 MW).
- B As of 0729 hours, May 12, 2019, St. Anthony Diesel Plant available at 8.85 MW (9.7 MW).
- C As of 1000 hours, May 16, 2019, Holyrood Unit 2 removed from service for economic dispatch (170 MW).
- D As of 1303 hours, May 26, 2019, Bay d'Espoir Unit 7 unavailable due to planned outage (153.4 MW).
- E As of 1057 hours, May 28, 2019, Stephenville Gas Turbine unavailable due to planned outage (50 MW).
- F As of 1837 hours, June 07, 2019, Holyrood Unit 1 removed from service for economic dispatch (170 MW).

**Section 2
Island Interconnected Supply and Demand**

Mon, Jun 10, 2019	Island System Outlook ³		Seven-Day Forecast	Temperature (°C)		Island System Daily Peak Demand (MW)	
				Morning	Evening	Forecast	Adjusted ⁷
Available Island System Supply: ⁵	1,310	MW	Monday, June 10, 2019	5	3	1,005	1,005
NLH Island Generation: ⁴	995	MW	Tuesday, June 11, 2019	8	10	935	935
NLH Island Power Purchases: ⁶	110	MW	Wednesday, June 12, 2019	10	11	965	965
Other Island Generation:	205	MW	Thursday, June 13, 2019	11	12	840	840
ML/LIL Imports:	-	MW	Friday, June 14, 2019	12	14	805	805
Current St. John's Temperature & Windchill:	5 °C	N/A °C	Saturday, June 15, 2019	12	13	765	765
7-Day Island Peak Demand Forecast:	1,005	MW	Sunday, June 16, 2019	13	10	815	815

Supply Notes For June 10, 2019

3

- Notes:
1. Generation outages for running and corrective maintenance are included. These are not unusual for power system operations. They generally do not impact customer supply. The power system operators schedule outages to system equipment whenever possible to coincide with periods when customer demands are low and sufficient supply reserves are available. However, from time to time equipment outages are necessary and reserves may be impacted.
 2. Due to the Island system having no synchronous connections to the larger North American grid, when there is a sudden loss of large generating units there may be a requirement for some customer's load to be interrupted for short periods to bring generation output equal to customer demand. This automatic action of power system protection, referred to as under frequency load shedding (UFLS), is necessary to ensure the integrity and reliability of system equipment. Under frequency events have typically occurred 5 to 8 times per year on the Island Interconnected System and the resultant customer load interruptions are generally less than 30 minutes. With the activation of the Maritime Link frequency controller during the winter of 2018, UFLS events have occurred less frequently.
 3. As of 0800 Hours.
 4. Gross output including station service at Holyrood (24.5 MW) and improved NLH hydraulic output due to water levels (35 MW).
 5. Gross output from all Island sources (including Note 4).
 6. NLH Island Power Purchases include: CBPP Co-Gen, Nalcor Exploits, Rattle Brook, Star Lake, Wind Generation and capacity assistance (when applicable).
 7. Adjusted for curtailable load, market activities and the impact of voltage reduction when applicable.

**Section 3
Island Peak Demand Information
Previous Day Actual Peak and Current Day Forecast Peak**

Sun, Jun 09, 2019	Actual Island Peak Demand ⁸	21:35	917 MW
Mon, Jun 10, 2019	Forecast Island Peak Demand		1,005 MW

- Notes: 8. Island Demand / LIL / ML Exports (where applicable) is supplied by NLH generation and purchases, plus generation owned and operated by Newfoundland Power and Corner Brook Pulp & Paper (Deer Lake Power, DLP).